

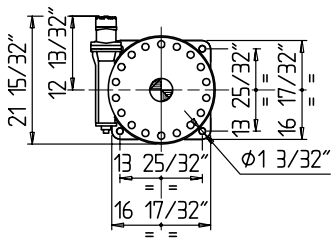
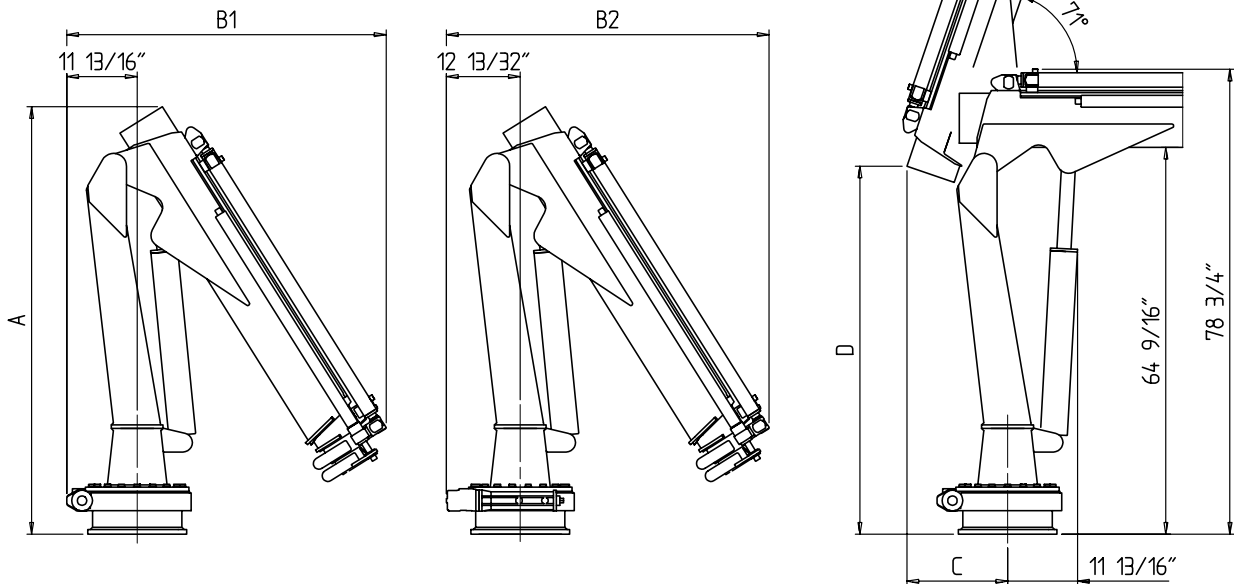


TECHNICAL SHEET

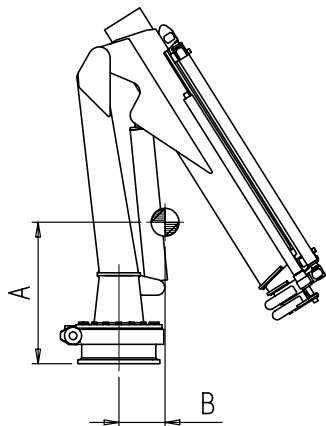
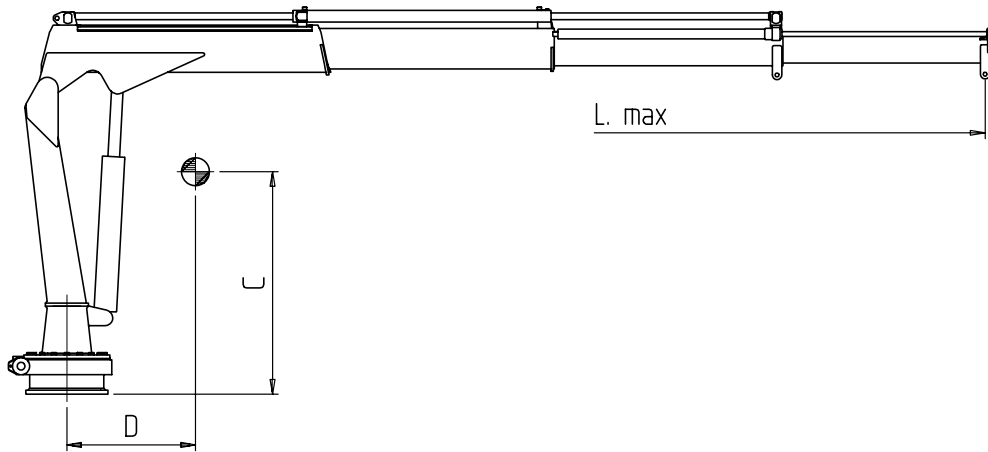


Cod.: MP.0.171 US
Rev.: 0

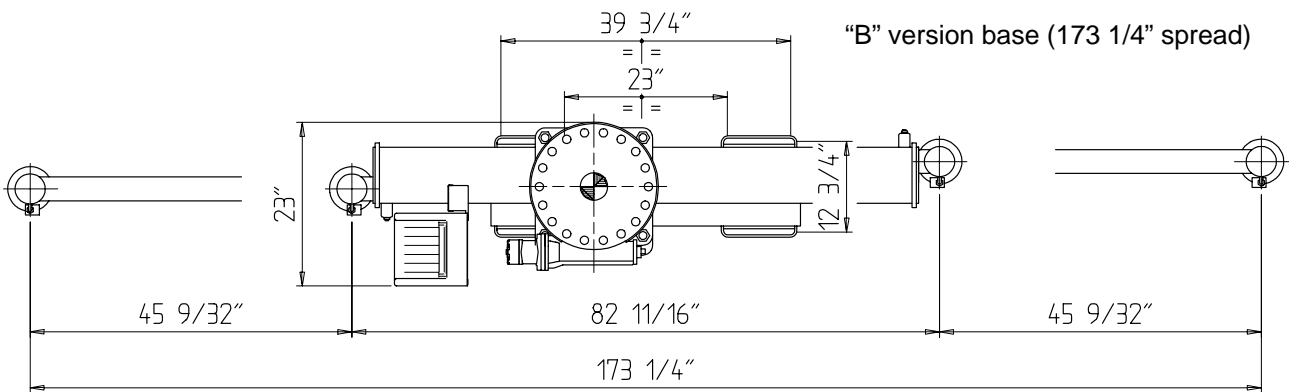
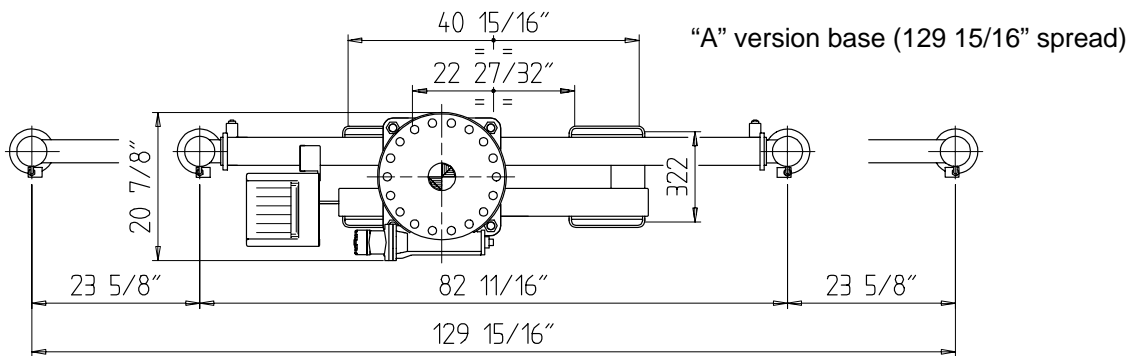
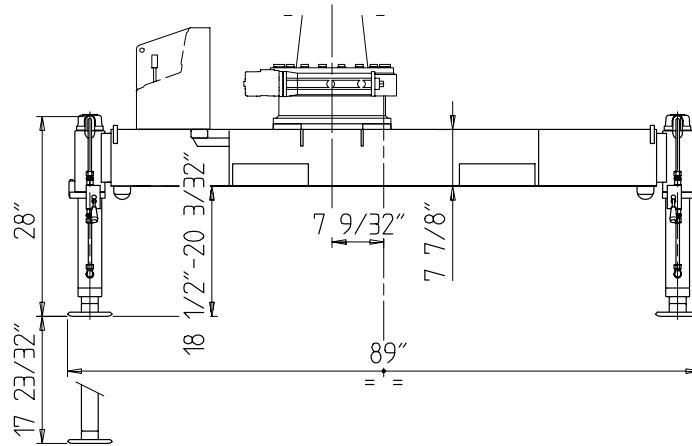




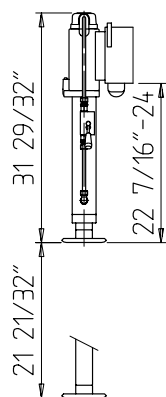
DIMENSIONS					
CRANE	A	B1	B2	C	D
ML 510.2	72"	54 1/2"	55"	17 1/2"	61 1/2"
ML 510.3	72"	54 1/2"	55"	17 1/2"	61 1/2"
ML 510L.2	70 1/2"	59 1/2"	60"	17 1/2"	63 1/2"
ML 510L.3	70 1/2"	59 1/2"	60"	17 1/2"	63 1/2"
ML 510L.4	70 1/2"	59 1/2"	60"	17 1/2"	63 1/2"



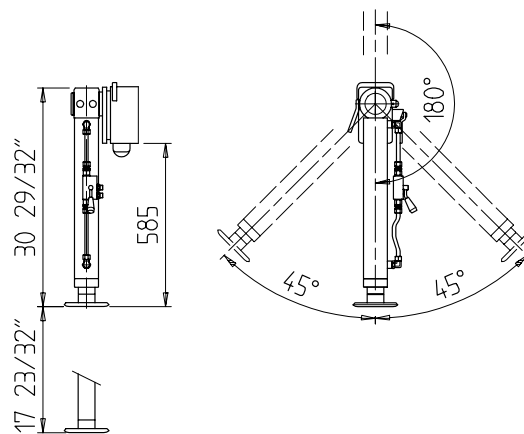
CRANE	A	B	C	D	L max
ML 510.2	26 1/2"	6 3/4"	37"	21 1/2"	143"
ML 510.3	27 1/4"	7 7/8"	39 1/2"	31 1/2"	185"
ML 510L.2	23 1/2"	8 3/4"	38 1/2"	29 1/4"	173"
ML 510L.3	24 1/2"	10 1/4"	41 1/2"	43"	226"
ML 510L.4	24"	11 1/2"	43"	53 1/2"	269"



Long version stabilizer cylinder



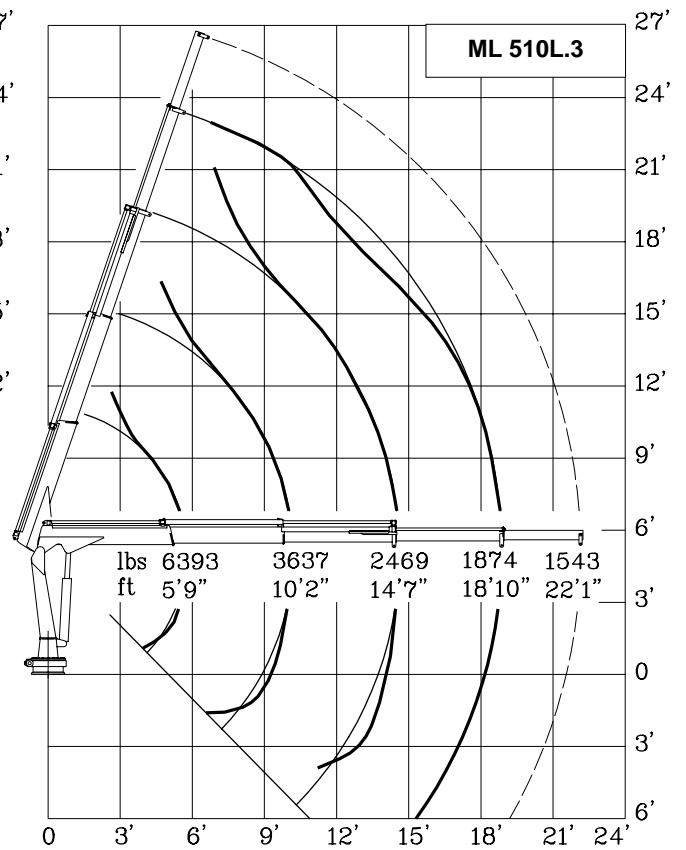
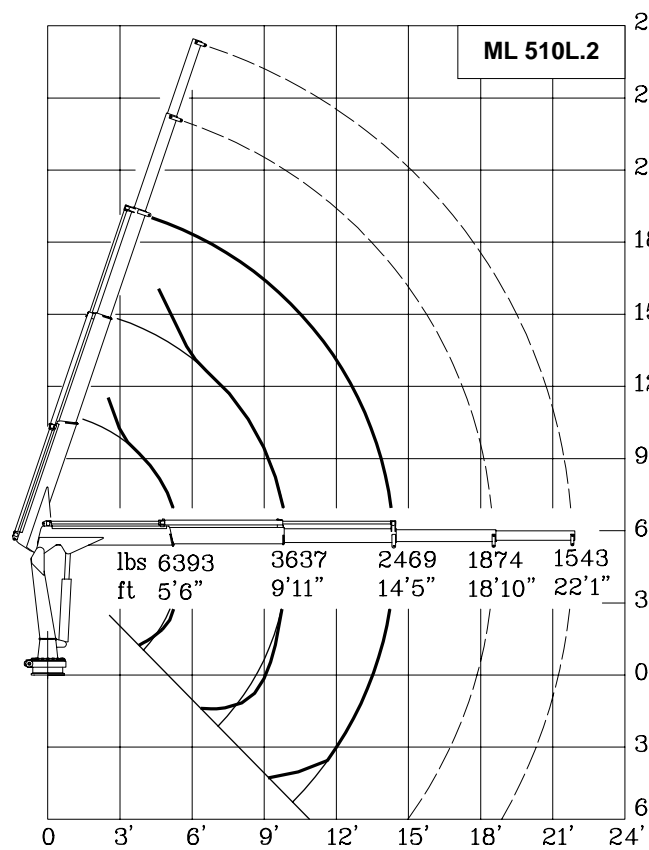
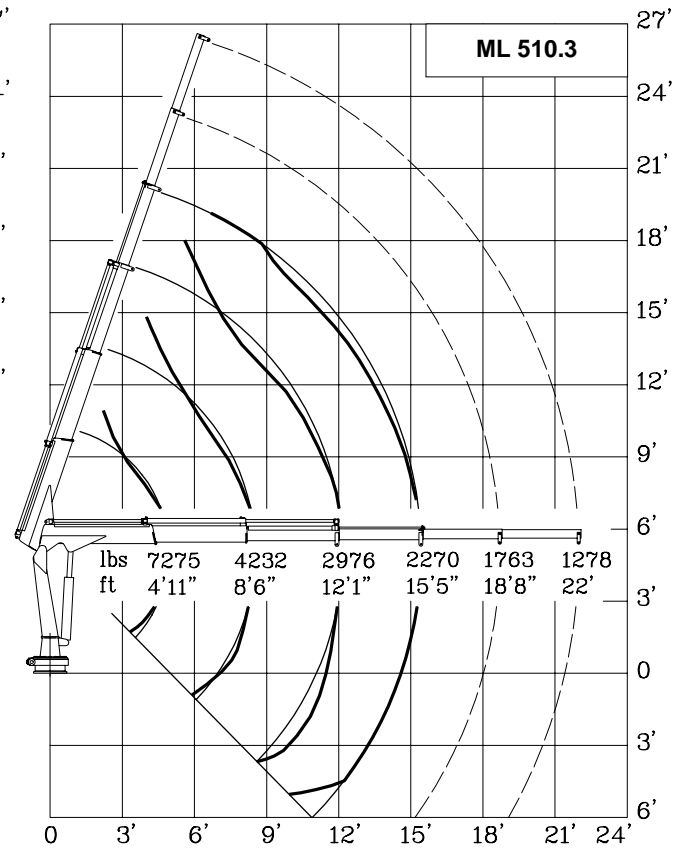
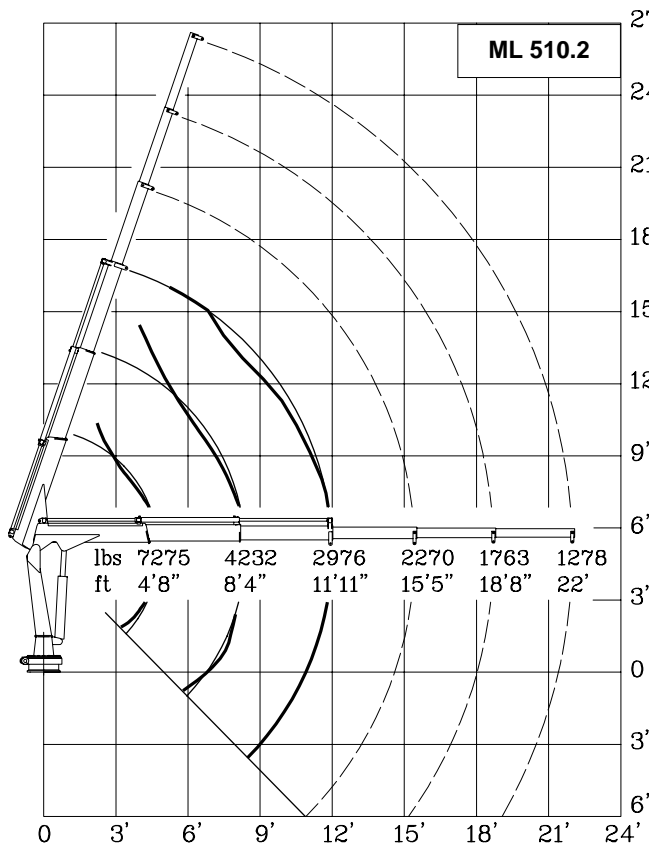
Tilting version stabilizer cylinder

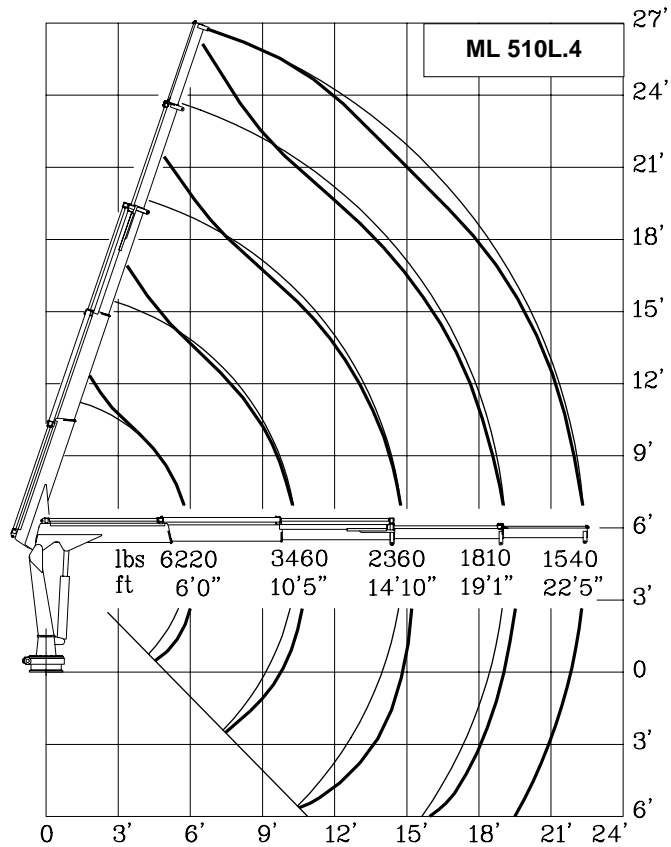


TECHNICAL DATA	U.M.	VERSION				
		ML 510.2	ML 510.3	ML 510.2L	ML 510.3L	ML 510.4L
CRANE RATING	ft lbs	35400				
STANDARD EXTENSIONS Nr (HYDRAULICS)	Nº	2	3	2	3	4
STANDARD OUTREACH	ft	11' 11"	15' 5"	14' 5"	18' 10"	22' 5"
SLEWING ANGLE	º	330º				
MAXIMUM ANGLE SLOPE	º	5º				
SLEWING TORQUE	ft lbs	5900				
MAX. LIFTING HEIGHT FROM CRANE BASE	ft	16' 5"	19' 8"	18' 8"	23'	26' 3"
SUGGESTED OIL FLOW	gpm	4÷4.8				
MAX. WORKING PRESSURE	p.s.i.	3335				
BASIC CRANE WEIGHT	lbs	1025	1100	1070	1170	1245
BASE WEIGHT WITH EXTENDABLE STAB., "A" VERS.	lbs	530÷595				
BASE WEIGHT WITH EXTENDABLE STAB., "B" VERS.	lbs	670÷760				

WINCH SPECIFICATIONS	U.M.	
MAX. WINCH SINGLE LINE CAPACITY (3 rd LAYER)	lbs	2200
ROPE RAISING SPEED (3 rd LAYER)	ft/min	49.2
ROPE LOWERING SPEED (3 rd LAYER)	ft/min	65.6
ROPE DIAMETER	inches	5/16"
ROPE LENGTH	ft	98' 5"
WINCH KIT WEIGHT	lbs	165

OPERATING TIMES												
SLEW. (rpm)	LIFTING (sec)	LOWER. (sec)	EXTENSION OUT (sec)					EXTENSION IN (sec)				
			510.2	510.3	510L.2	510L.3	510L.4	510.2	510.3	510L.2	510L.3	510L.4
			2.3	21	13	17	22	20	31	36	10	12





Lifting class **HC1 – HD4/B3**



by Next Hydraulics Via Mediterraneo n°6, 42022 Boretto (R.E.) Italy

Tel.: +39.0522.963008, Fax.: +39.0522.963039 <http://www.maxiliftcrane.com> E-mail: info@maxiliftcrane.com