

# 8051

8,600 lbs capacity

HYDRAULIC



STANDARD FEAT-

- 8,600 lb Lift Capacity @ 5.8 ft
- 21 ft of Hydraulic Reach
- 4 Function Hydraulic Power
- Hex Boom with Low Profile Jib Head
- Boom Mounted Planetary Winch
- Wireless Proportional Control with Digital Crane Load Display

OP-

- LED Boom Tip Light

SPECIFICATIONS

- 50,000 ft-lb Crane Rating
- 18.5 ft Lifting Height
- 12 ft to 21 ft Reach with 1 Hydraulic Boom Extension
- 58 FPM Winch Speed
- 3/8" x 120 ft Cable
- 400° Rotation with Sealed Turret
- 1,750 lbs Operating Weight
- 18" Ø Mounting Space Req'd
- 41" Storage Height
- 159" Storage Length
- 19,500 lb min Chassis GVW req'd
- 8 GPM @ 2,900 PSI Open Center Hyd Req'd
- 33 ft Remote Tether Cord
- Meets ANSI/ASME B30.5(2011), OSHA 1910.180



Auto II Speed automatically reduces the maximum working speed of all crane functions when a load is sensed.

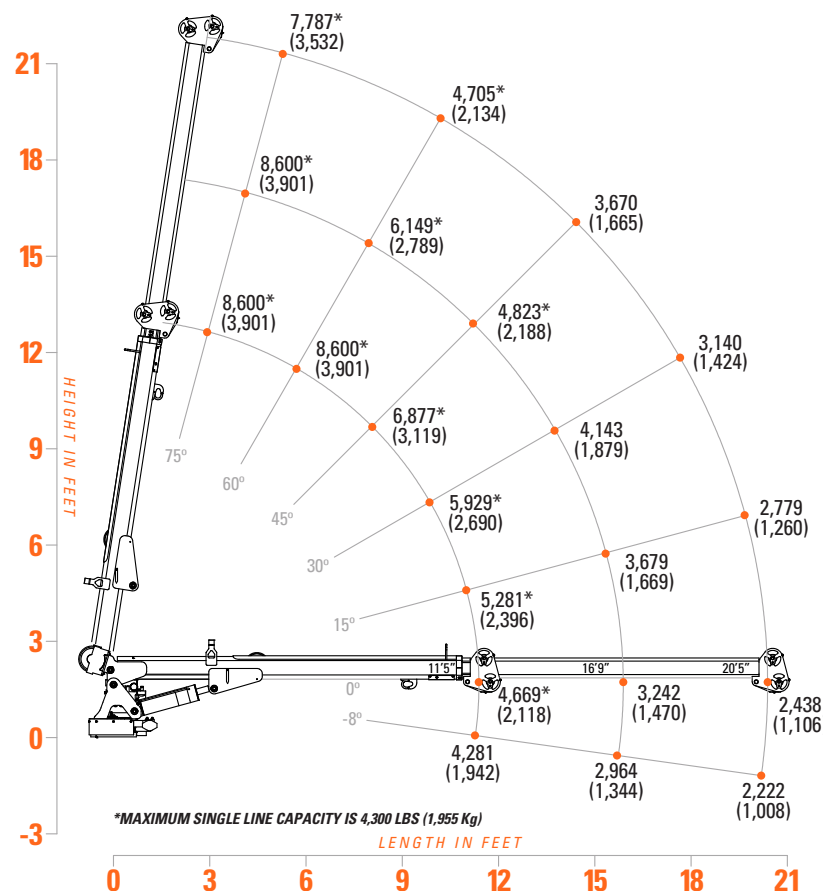


D03 Valve system provides reliable hydraulic control, indicator lights, integrated filtration and manual overrides.



Boom Tip Light Option adds work area lighting directly below hook. Dual LED lights with side

LOAD CAPACITIES



The 8051 is largest crane available to be mounted on a 19.5k GVW chassis. With 8,600 lbs of gross lifting capacity, 21 ft of full hydraulic reach, Auto II Speed and high speed planetary winch, the 8051 will be your jobsite workhorse.