

7543

7,500 lbs capacity

HYDRAULIC



STANDARD FEAT-

- 7,500 lb Lift Capacity @ 3.2 ft
- 30.5 ft of Hydraulic Reach
- 4 Function Hydraulic Power
- Hex Boom with Low Profile Jib Head
- Boom Mounted Planetary Winch
- Wireless Proportional Remote with Digital Crane Load Display

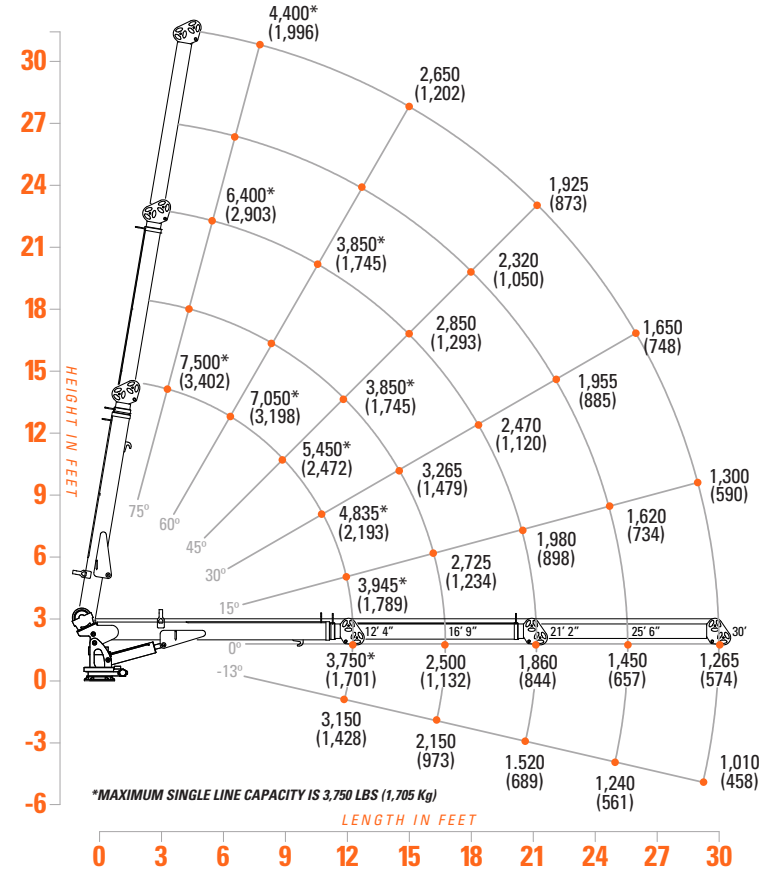
OP-

- LED Boom Tip Light

SPECIFICA-

- 47,000 ft-lb Crane Rating
- 29 ft Lifting Height
- 12 ft to 30.5 ft Hydraulic Boom Extension
- 68 FPM Winch Speed
- 3/8" x 120 ft Cable
- 400° Rotation with Sealed Turret
- 1850 lbs Operating Weight
- 18" Ø Mounting Space Req'd
- 41.7" Storage Height
- 170" Storage Length
- 19,500 lb min Chassis GVW Req'd
- 8 GPM @ 2750 PSI – Open Center
- 33 ft Remote Tether Cord
- Meets ANSI/ASME B30.5(2011), OSHA 1910.180

LOAD CAPACITIES



The 7543 is the newest addition to the Tiger Crane family and comes with the latest in crane innovations. Featuring 30.5 ft of all hydraulic reach in a lightweight package, the 7543 is the model for operators that require extended crane reach in a medium duty truck package.



Fixed Rotation - The 7543 features a fixed base that allows it to work well with deck covers without the need for a riser.



Exclusive sequenced two Stage Hydraulic Boom Extensions provide a total of 30.5 ft of reach.



Boom Tip Light Option - Adds work area lighting directly below hook. Dual LED lights with side to side adjustment.