

6541E

6541EP

6,500 lbs capacity

ELECTRIC

E



STANDARD FEATURES

- 6,500 lb Lift Capacity
- 21 ft of Hydraulic Reach
- Hex Boom with Low Profile Jib Head
- 12 V DC Electric Planetary Winch
- 12 V DC Hydraulic Power Unit
- Full Power x 4 Functions

OPTIONAL FEATURES

- Wireless Control
- Wireless 3 Function Proportional Control
- LED Boom Tip Light

SPECIFICATIONS

- 40,000 ft-lb Crane Rating
- 18.5 ft Lifting Height
- 12 ft to 21 ft Reach with 1 Hydraulic Boom Extension
- 36 FPM Winch Speed
- 3/8" x 120 ft Cable
- 400° Rotation with Sealed Turret
- 1565 lbs Operating Weight
- 18" Ø Mounting Space Req'd
- 37" Storage Height
- 159" Storage Length
- 14,500 lb min Chassis GVW Req'd
- Paint & Powder Coated Finish
- Meets ANSI/ASME B30.5 (2011) and OSHA 1910.180



Optional Wireless Remote with Corded Tether adds work zone freedom to crane operation.

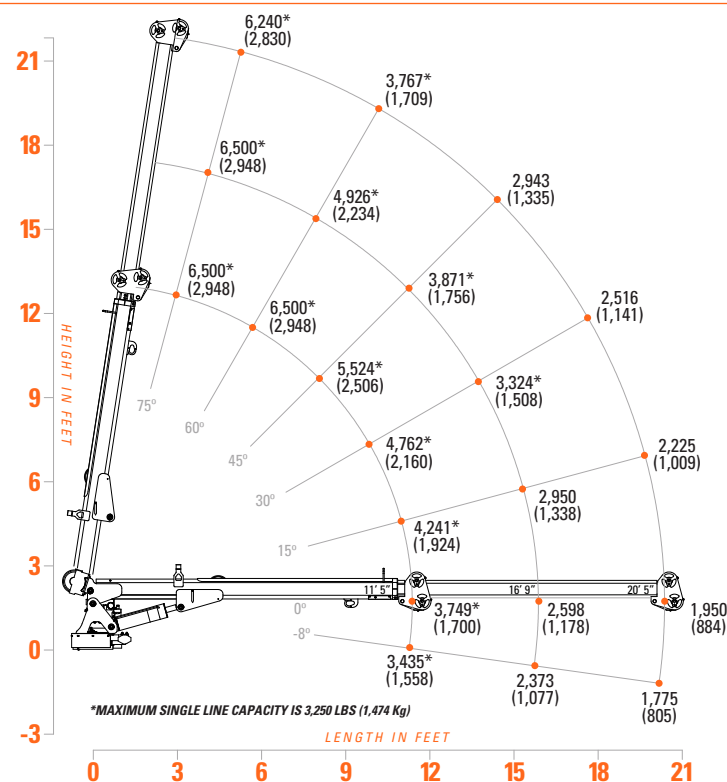


EP model adds wireless 3 function proportional control with digital load display, improving operational smoothness and load handling.



Standard Corded remote features a heavy duty aluminum housing and purpose built umbilical cord for maximum durability

LOAD CAPACITIES



The 6541E and EP are the largest electric models available from Tiger Cranes. With industry leading capacity, these cranes will lift your heavy work without a PTO and pump. The 6541E & 6541EP feature 21 ft of full hydraulic reach with self aligning hex booms, dual 12 V DC motors for increased duty cycle and Anti Bounce Technology.