

3215E

3,200 lbs capacity

ELECTRIC

E



OP- STANDARD FEAT-

- 3,200 lb Lift Capacity @ 3.5 ft
- 15 ft of Hydraulic Reach
- 12 V DC Electric Planetary Winch
- 12 V DC Hydraulic Power Unit
- Full Power x 4 Functions
- 20 ft Corded Remote

OP-

- Wireless Control
- Full Hydraulic Power

SPECIFICA-

- 11,000 ft-lb Crane Rating
- 12.75 ft Lifting Height
- 9 ft to 15 ft Reach with 1 Hydraulic Boom Extension
- 22 FPM Winch Speed
- 1/4" x 80 ft Cable
- 400° Rotation with Sealed Turret
- 745 lbs Operating Weight
- 14" x 14" Mounting Space Req'd
- 34" Storage Height
- 119" Storage Length
- 11,000 lb min Chassis GVW Req'd
- Powder Coated Finish
- Meets ANSI/ASME B30.5 (2011) and OSHA 1910.180



Double Reduction Full Power Rotation is very durable and trouble free.

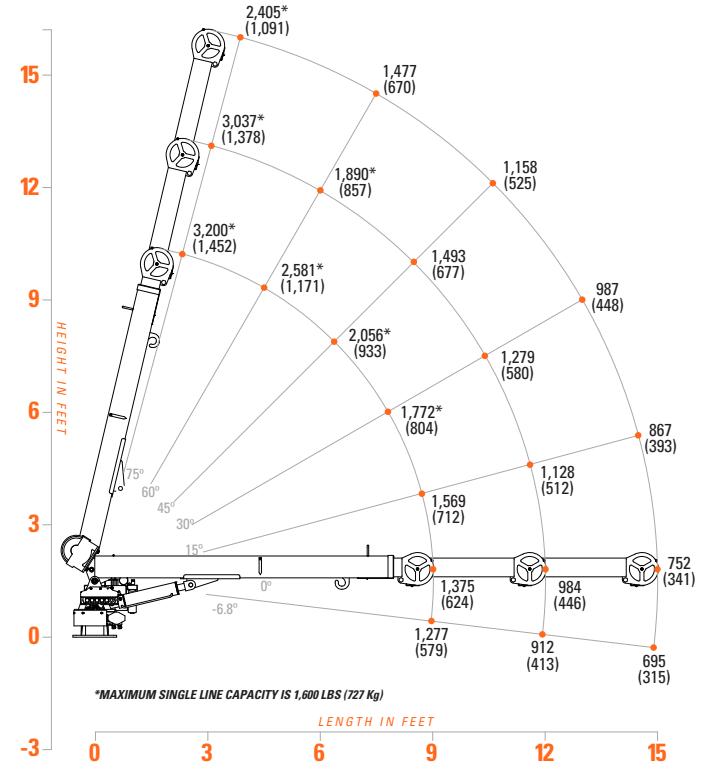


Full Hydraulic Extension and Nylatron Sheave provide quicker picks and less maintenance.



Optional Wireless Remote with Corded Tether adds work zone freedom to crane operation.

LOAD CAPACITIES



The 3215E is the smallest full function model from Tiger Cranes. Featuring full reach without manual extensions, sealed center rotation, powder coated finish and Anti-Bounce Technology, the 3215E has all the big crane features in a small package. Best suited for 11 ft crane bodies, the 3215E will be the work horse in your small crane