

2085

2,000 lbs capacity

ELECTRIC



STANDARD FEATURES

- 2,000 lb Lift Capacity
- 10.5 ft of Manual Reach
- 12 V DC Electric Planetary Winch
- 12 ft Corded Remote
- 360° Continuous Rotation with Manual Band Brake
- Spring Assisted Boom Lift

OPTIONS

- 36.25" Tall Base – Model 2085TB
- 33 ft Remote Control

SPECIFICATIONS

- 8,500 ft-lb Crane Rating
- 7 ft Lifting Height
- 6-7.5-9-10.5 ft Manual Boom Extension
- 0-21-45 Boom Elevation
- 25 FPM Winch Speed
- 3/16" x 40 ft Cable
- 350 lbs Operating Weight
- 12" x 12" Mounting Space Req'd
- 33" Storage Height
- 81" Storage Length
- 8,500 lb min Chassis GVW Req'd
- Powder Coated Finish



Spring assist for easy boom maneuvering

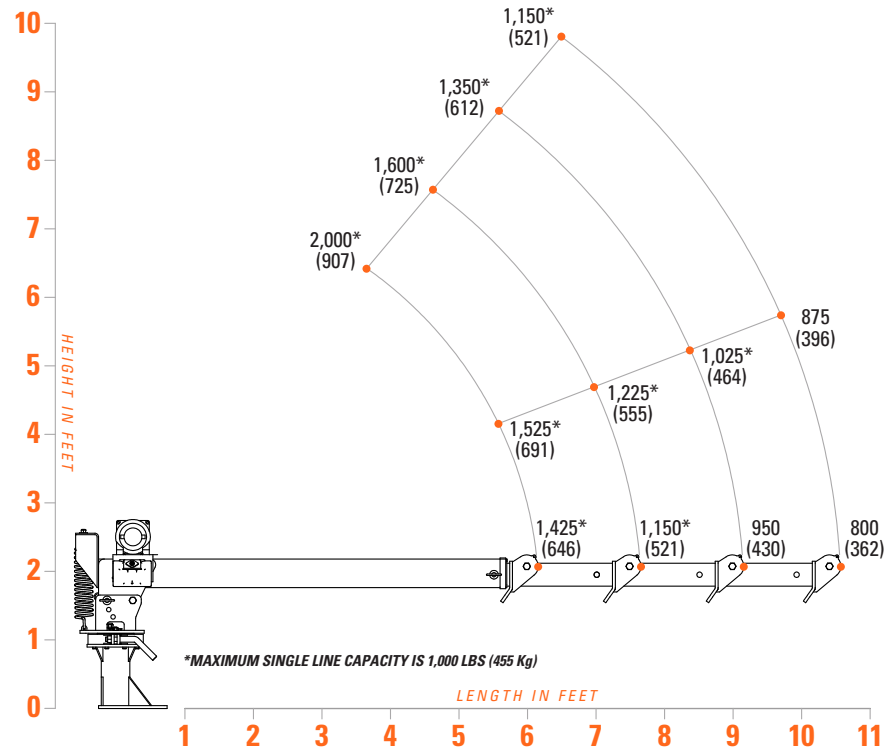


Slew bearing for easy rotation and manual band brake



Detachable 12 ft Corded Remote

LOAD CAPACITIES



The 2085 manual crane provides a full range of usable positions, reliable rotation bearing and electric winch in an economical package.