

1479

14,000 lbs capacity

HYDRAULIC

H



STANDARD FEATURES

- 14,000 lb Lift Capacity @ 5.1 ft
- 29 ft of Hydraulic Reach
- 4 Function Hydraulic Power
- Hex Boom with Low Profile Jib Head
- Boom Mounted Planetary Winch
- Wireless Proportional Control with Digital Crane Load Display

OPTIONAL

- LED Boom Tip Light

SPECIFICATIONS

- 90,000 ft-lb Crane Rating
- 26.5 ft Lifting Height
- 12 ft to 29 ft Reach with 2 Hydraulic Boom Extensions
- 45 FPM Winch Speed
- 1/2" x 120 ft Cable
- 400° Rotation with Sealed Turret
- 3,140 lbs Operating Weight
- 21" Ø Mounting Space Req'd
- 46" Storage Height
- 164" Storage Length
- 33,000 lb min x 120 CA Chassis GVW Req'd
- 10 GPM @ 3000 PSI Open Center Hyd Req'd
- 33 ft Remote Tether Cord
- Meets ANSI/ASME B30.5(2011), OSHA 1910.180



Auto II Speed automatically reduces the maximum working speed of all crane functions when a load is sensed.

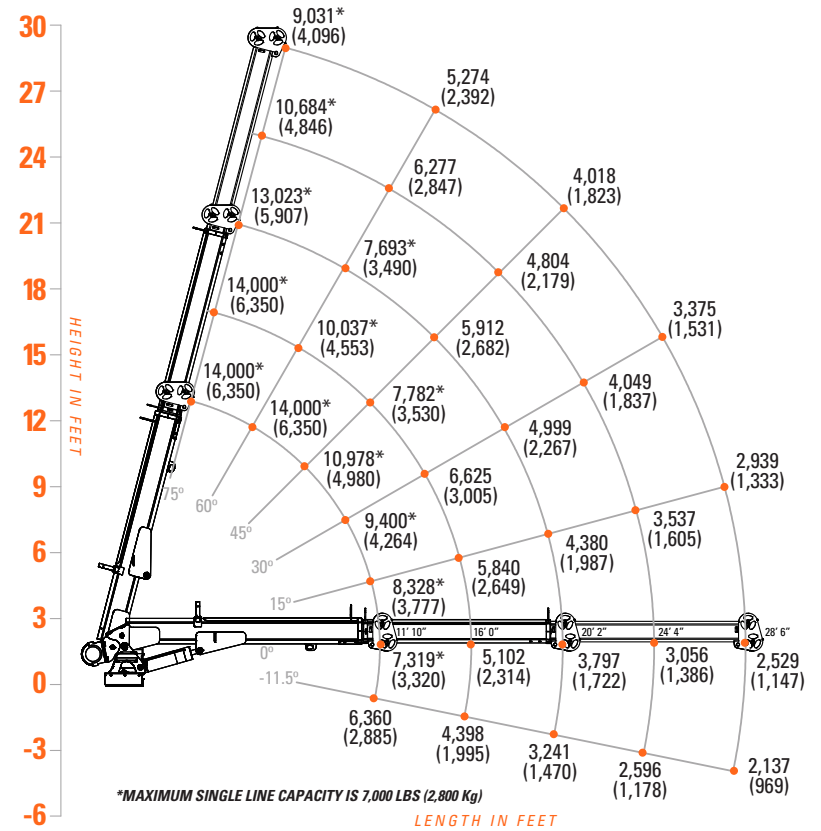


D03 Valve system provides reliable hydraulic control, indicator lights, integrated filtration and manual overrides.



Boom Tip Light Option adds work area lighting directly below hook. Dual LED lights with side

LOAD CAPACITIES



The 1479 crane is the largest Tiger Crane available. Designed for maximum loads and reach, the 1479 has 14,000 lbs of lift capacity and a 90,000 ft/lb crane rating. Whether you need big capacity or long reach, the 1479 has it all.